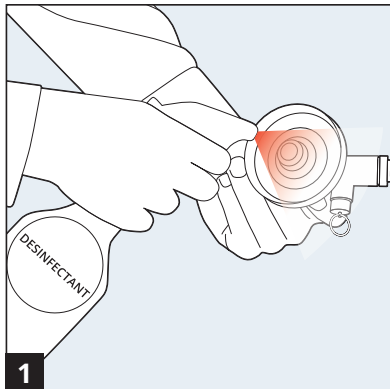
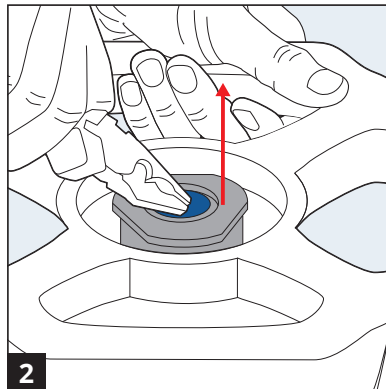


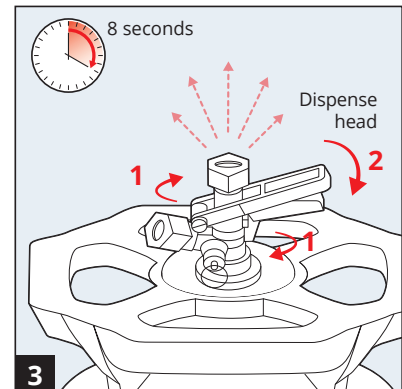
Manual filling instructions KeyKeg



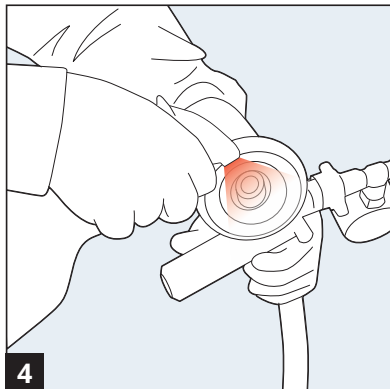
1 Sanitize dispensing head with disinfectant.



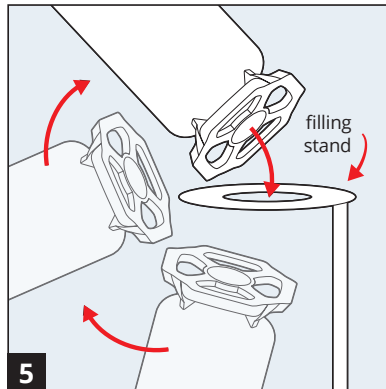
2 Remove the dust cap and discard. Do not replace the dustcap after filling!



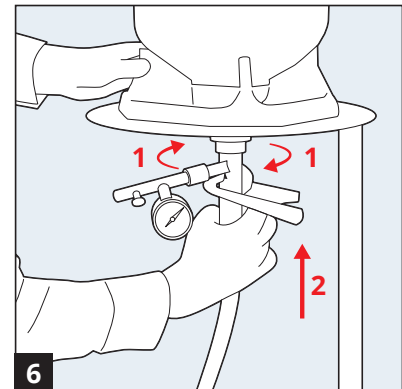
3 Vent KeyKeg bag for 8 seconds with a KeyKeg dispensing head.



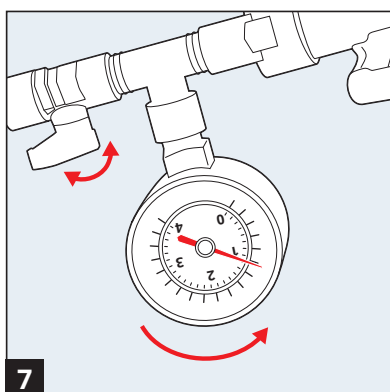
4 Sanitize KeyKeg filling head with disinfectant and fill line with beverage until top.



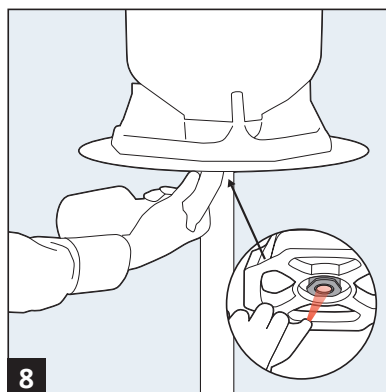
5 Place the KeyKeg upside-down! The spray the fitting with disinfectant while upside-down.



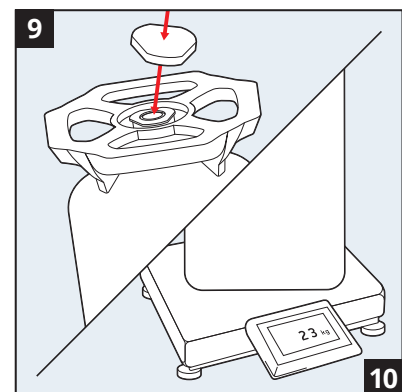
6 Connect the KeyKeg filling head and open the beverage valve.



7 Keep counter pressure to a level well over the equilibrium pressure of the beverage and open gas valve gradually. When pressure is '0' leave the beverage valve open for an extra 3 seconds.



8 Sanitize inside valve with disinfectant and clean with warm water after filling, when still upside down.



9 Place KeyKeg right-side-up. Weigh the KeyKeg and seal with a snap cap.



www.onecirclecommunity.com